

Handed to Panel
31/8/18

Statement to Sydney North Planning Panel by Robert Varga, Traffic Engineer

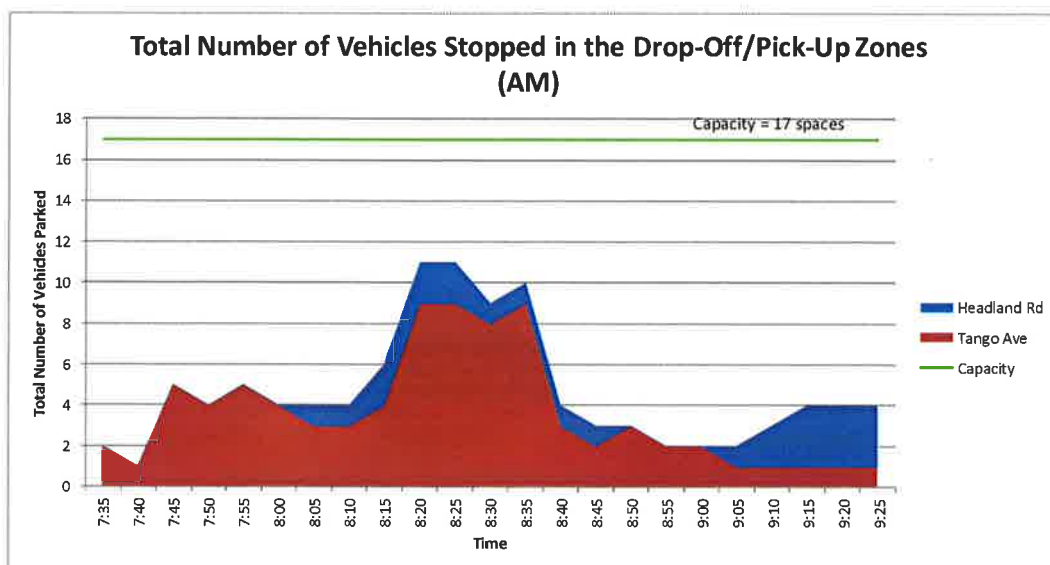
1. The student enrolment of 884 students was approved by development application 2003/1728, approved on 10 December 2004.
2. There has not been any increase in student numbers since that DA was approved in 2004.
3. The number of parking spaces provided on the site was increased from 57 spaces to 139 spaces with the construction of a multi-storey car parking structure located in Tango Avenue which was completed in 2012. (Council DA No. 2009/0177 & BER No. 1PA09/0174.1, 3 Feb 2010).
4. On 7 May 2015 the L & E Court approved development application number DA2013/1525 to facilitate the construction of a number of music practice rooms in the school hall undercroft area, with a reduction in car parking to 132 spaces as set out in the table below:

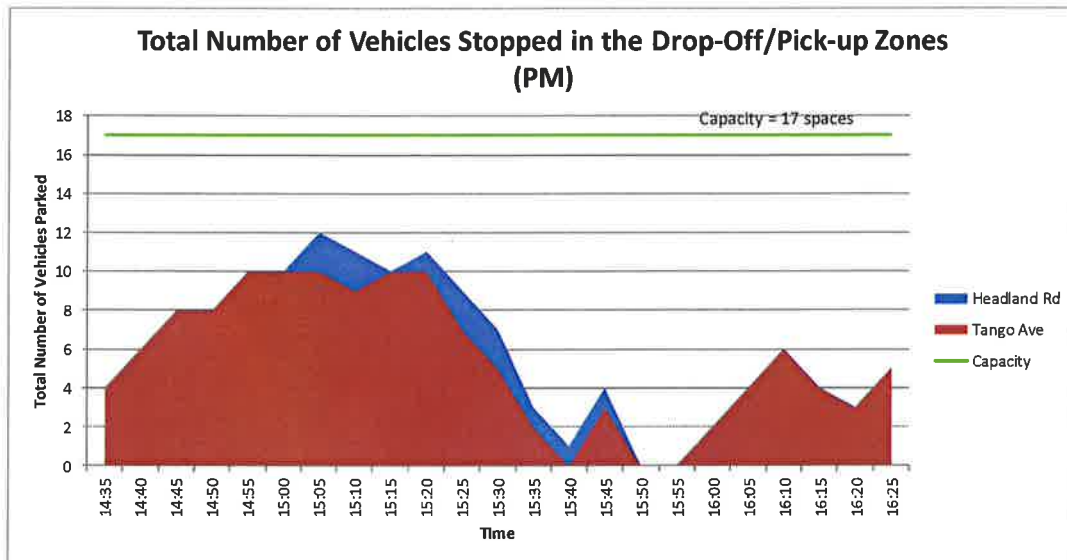
Off-Street Car Parking

104 spaces:	Multi-storey staff car park
14 spaces:	School hall undercroft staff car park
10 spaces:	Student car park off Headland Road
2 spaces:	Disabled parking
1 space:	School visitors
1 space:	School deliveries
132 spaces:	TOTAL

5. In short, the number of off-street parking spaces provided on the site has been more than *doubled* without any increase in student or staff numbers.
6. There are a further 17 drop-off/pick-up parking spaces and bus bays located on-street around the perimeter of the school site in Headland Road, Quirk Street and Tango Avenue.
7. Surveys of the 17 drop-off/pick-up spaces before/after school at 5 minute intervals identified a peak parking demand of typically in the order of 11 to 12 cars in the drop-off/pick-up zones. The survey results are illustrated on the 2 graphs for the morning and afternoon peak periods shown on pages 18 and 19 of the traffic report (see also below)

Survey - 9/2015
Tues.

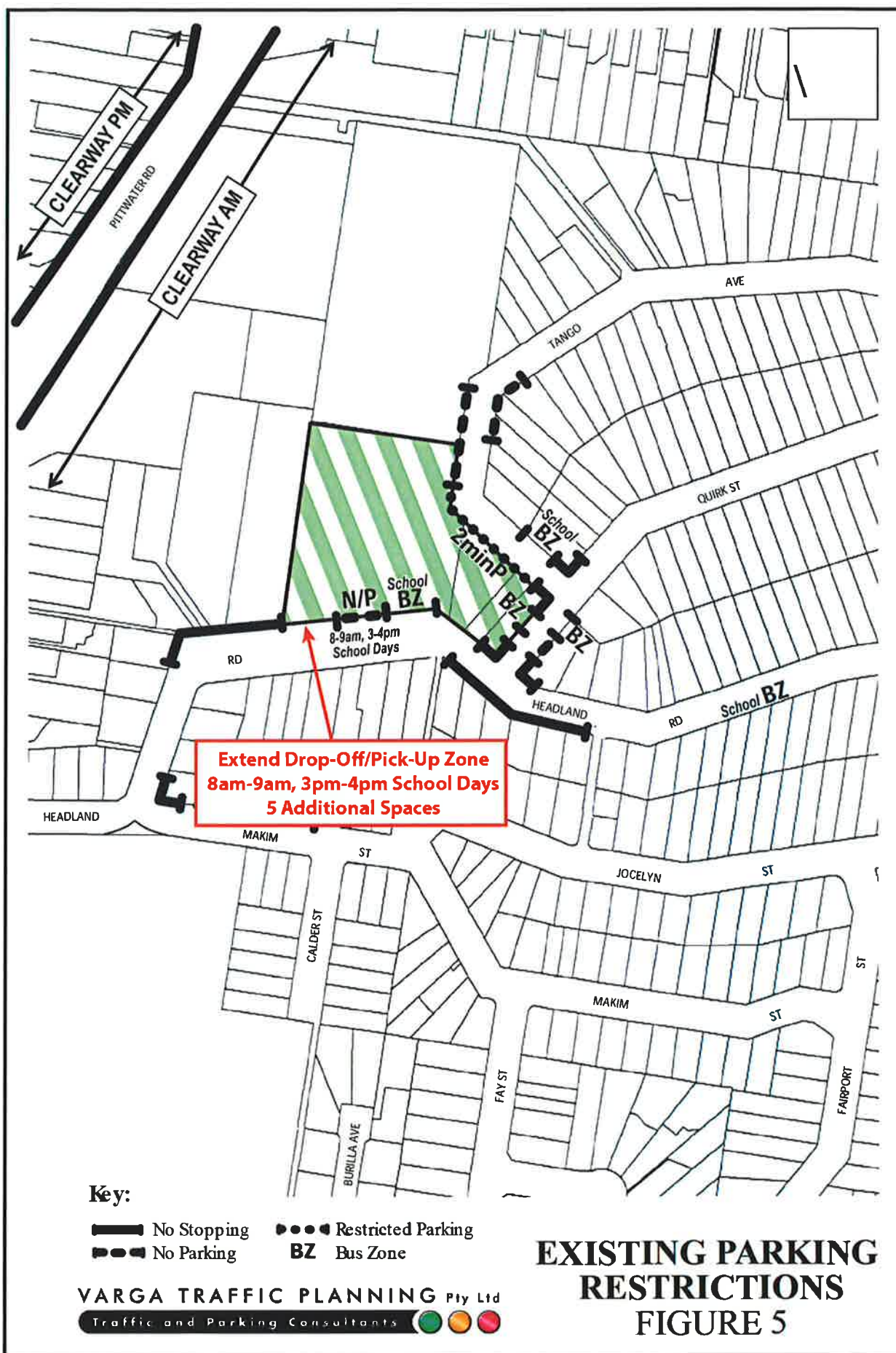




8. On a pro-rata basis, the increased student numbers will therefore result in an increase in drop-offs and pick-ups of approximately 2 cars at any one point in time.
9. The survey results show that there is sufficient capacity to accommodate the additional drop-off/pick-up demands which would be generated by the proposed increase in student numbers.
10. The surveys and observations also show that drop-offs/pick-ups are typically completed within 2-3 minutes, and that the peak demand for the drop-off and pick-up zones occurs for only 20 to 30 minutes each morning and afternoon.
11. At the previous LEC hearing it was agreed that 10 parking spaces would be allocated for the use of the 83 students in Year-12. On a pro-rata basis the 37 additional Year-12 students would generate a need for 4 additional Year-12 parking spaces.
12. The applicant is willing to accept the condition of consent requiring that 4 additional Year-12 parking spaces be provided on the site, in addition to the 10 Year-12 parking spaces previously approved by the LEC.
13. It is noted that not all the on-street kerbside parking around the perimeter of the school has been allocated to school users. There are 5 unrestricted kerbside parking spaces located near the western boundary of the school in Headland Road, east of the driveway to 224 Headland Road (see Figure 5 in the traffic report, reproduced below). These 5 spaces could be used to extend the existing drop-offs/pick-ups in Headland Road. This would require a separate approval from Council's Traffic Committee.

31 January 2018

Ref 18028





31 January 2018

Sydney North Planning Panel
Christie Conference Centre
100 Walker Street
NORTH SYDNEY NSW 2060

Dear Panel Members,

My name is Mrs Jann Robinson and I am the Principal of St Luke's Grammar School. I have been the Principal for 13 years. This DA is in relation to increasing numbers. The number increase is specifically for the Senior School starting with an incremental increase from Year 7. The Junior School number will remain static.

Since the completion of the John Scott Hall at the end of Term 1, 2017 we have followed the Traffic Management Plan as required by the DA:

- 10 Year 12 students park on site
- the Oval is used for special events which happen during the school day
- the Multi-Level carpark is opened for every out of hour event
- the major end of year events have been moved off site
- neighbours are notified of any events that will have an impact on the local streets.

At the beginning of each year I write to parents asking them to observe the traffic signage around the School and to park with consideration to the neighbours. Year 12 are also instructed to park considerately. When complaints are received they are followed up to ensure that the situation is remedied.

Students are actively encouraged to travel to and from school by bus. In the Senior School 85% of students travel by bus, while 10% of the Junior School students catch buses. Of the 20% of students in the Senior School who don't catch the bus, a number of them walk home as they live locally and a small number ride bikes, fewer than 5% are picked up.

With the increased number of school aged students on the Northern Beaches all schools are under pressure for enrolments. I am aware that other local schools are also under pressure and some have responded to the need by reducing their catchment areas. Balgowlah Boys and Mackellar Girls have taken such measures as have a number of Primary Schools.

Dee Why Campus
Pre-K to Year 12

210 Headland Road
Dee Why NSW 2099
office@stlukes.nsw.edu.au
(02) 9438 6200

Bayview Campus
Pre-K to Year 6

1977 Pittwater Road
Bayview NSW 2104
bayviewoffice@stlukes.nsw.edu.au
(02) 9979 5755

Our current Wait Lists (i.e., those seeking a place after all available places have been offered) are for 2018 and 2019 as follows:

ST LUKE'S GRAMMAR SCHOOL
SENIOR SCHOOL WAITLISTS as at 30 January 2018

2018				
YEAR 7	YEAR 8	YEAR 9	YEAR 10	YEAR 11
122	30	25	37	13

2019				
YEAR 7	YEAR 8	YEAR 9	YEAR 10	YEAR 11
173	10	28	12	3

In relation to student movement before and after school. There is a staggered finish time between the Senior and Junior Schools which is reflected in the duty times.

- (a) AM in Tango Ave: The trained Traffic Marshall is present from 8am until 8:45am. A teacher is also on duty from 8:15am until the start of the School day at 8:30am. The Head of Junior School or the Assistant Head of Junior School is also present.
- (b) PM in Tango Ave: On the Southern side, the trained Traffic Marshall is on duty from 2:30pm to 3:40pm. Two Junior School teachers (including a member of the Leadership team) arrive at 3:05pm and are on Duty until 3:30pm. A Senior School Teacher comes on Duty from 3:20pm until 3:40pm
On the Northern side two, Senior School Teachers are on duty from 3:20pm until all students have been loaded onto the buses that leave from the stand.
- (c) PM in Headland Road: very few students are picked up. Two members of the Executive Team (including me) are on duty from 3:20pm until all students are on the three buses that leave from the bus bay.
- (d) PM in Quirk Street, one Junior School Teacher, a Senior School Teacher and a member of the Executive Team are on Duty from 3:20pm until all students have been placed on buses.

Yours sincerely,



Jann Robinson
Principal



17 August, 2012

Mr M Regan
Mayor
Warringah Council's
Civic Centre
725 Pittwater Road
Dee Why NSW 2099

Dear Michael,

Following Ms Tricia Kelly's e-mail dated Thursday 16 August, 2012 with regards to parking. I am seeking clarification on a couple of issues. The first is that the School is not able to open the playing field for events that occur in School operational hours as this would pose a risk to students and we have never done so in the time I have been Principal. I had always assumed that the higher priority of student safety on site outweighed the mitigating of congested parking around the streets. The second is now that the School has built a parking facility on site for 104 car spaces which we make available for all out of hours events I had hoped that this would mean that the previous DA requirement to put 77 cars on the playing field would now be met through this provision.

As a school we endeavour to be considerate of our neighbours at all times. At considerable cost we added 104 car spots on site in a recent development thus accommodating all the teaching staff and relieving the parking on local streets. Additionally we recently changed the timing of the school day across the campus to reduce the volume of traffic at the end of the school day. This has resulted in a significant reduction to the grid lock which had previously been occurring.

It is frustrating that we are constantly receiving complaints whenever we have events citing the past DA. If, as I believe should be the case, this requirement has been met by the onsite parking, I would like to be able to respond to the neighbours clarifying this.

Yours sincerely,

Jann Robinson
Principal



**Warringah
Council**

Civic Centre 725 Pittwater Road
Dee Why NSW 2099
DX 9118
(02) 9942 2111
(02) 9971 4522

Telephone
Facsimile

Website
Email

www.warringah.nsw.gov.au
council@warringah.nsw.gov.au

20 September 2012

Ms Jann Robinson
Principal – St Luke's Grammar School
210 Headland Road
DEE WHY NSW 2099

Dear Ms Robinson

Re: Provision of Parking – St Luke's Grammar School

I refer to your letter to regarding the above, the Mayor has asked me to respond on his behalf.

Whilst Council can understand that the school has recently increased on site parking this corresponds to the everyday demand generated from the size of the student population and employee numbers. For example in 1985 the student population was approximately 620 students and the modelling for parking spaces under the current approval is based on 1020 students. The approval in 1995 for the multi use hall took into account the likely events where parents attending would generate a greater number of vehicle trips and parking requirements.

The consent (1995/604) required overflow parking for such peak times as detailed below.

Consent condition 24

The provision of overflow car parking for 77 vehicles on the existing playing fields located on the subject site. Such parking to be made available during peak usage times of the multi purpose hall to alleviate traffic and parking congestion on the adjoining road network.

This condition has not been modified or deleted through subsequent applications. The use of the hall for such events where parents attend could still generate a significantly greater demand for parking than the current number of spaces on site. In this regard the condition is still relevant and should always be considered taking into account likely attendance by drivers at an event, the availability of parking spaces on site and the time of the event.

Should you wish to discuss this matter further please contact Peter Robinson on 9942 2111.

Yours sincerely,

Boris Bolgoff
Acting Deputy General Manager - Environment



11 March 2015

Mr Michael Regan
Mayor of Warringah Council's
Civic Centre
725 Pittwater Road
Dee Why NSW 2099

mayor@warringah.nsw.gov.au

Dear Michael,

I am writing to bring to your attention a notification we received yesterday of a breach of our DA. It was in relation to our not opening the overflow parking for an event.

The situation is that the event has not yet taken place. We have notified all our neighbours of the event which will take place on Wednesday 11th March, Thursday 12th March and Saturday 14th March. We will be opening the overflow parking and we have assigned staff to direct parents into it. We have also written to all our families to advise them that the overflow parking is open.

If the complaint was about Monday night, we had a Dress Rehearsal with the children from the Far North Children's Home as an audience (approximately 30 people). They arrived at the School in one mini bus which was parked in the drop off zone. There were no other cars in relation to this evening.

It is extremely upsetting for us to be the constant object of one neighbour's ongoing complaints. This neighbour has made it clear that no matter what we do they will not be happy.

I want to assure you that we are seeking to do all we can to ensure we are a good neighbour. However, it is a fact of all schools that the peak times of drop off and pick up will cause inconvenience for those who live nearby. We have over the past ten years added significant parking to the site, taken a number of events off site, employed a trained Traffic Marshall and worked to make our parents more considerate.

Yours sincerely,

Jann Robinson
Principal

St Luke's Anglican School would accept the imposition of the following conditions of consent:

(1) **Kerbside parking zone – Headland.**

Within 30 days St Luke's shall apply to the Northern Beaches Local Traffic Committee for consideration and approval to extend the pick-up/set-down area in Headland Road to the 5 unrestricted spaces located near the western boundary of the School, east of the driveway to 224 Headland Road (see figure 5 of the Varga Traffic Report).

(2) **Extension of drop off / pick up area in Tango Street.**

The proponent shall extend the drop off / pick up area on Tango Street, on its own land for approximately 2 car spaces south of the entrance to the staff carpark on Tango Street.

(3) **Year 12 On-site parking**

An additional 6 car spaces shall be made available in the car park fronting Headland Road known as the undercroft which together with the 10 car spaces made available in the outdoor parking area fronting Headland Road will equal 16 car spaces available for students.

Maureen Peatman
Partner
Hunt & Hunt

(k) Drop off / Pick up in Tango Ave
The applicant should request the Council to amend the signage from PD to No parking.